



Learning Ovation

YOU WILL KNOW US BY YOUR OUTCOMES

Fidelity Creates Outcomes

ALL CHILDREN READING AT, OR ABOVE, GRADE LEVEL BY THE END OF GRADE 3

Math Facts

Students below grade-level have one - and only one - option to ***catch up***:

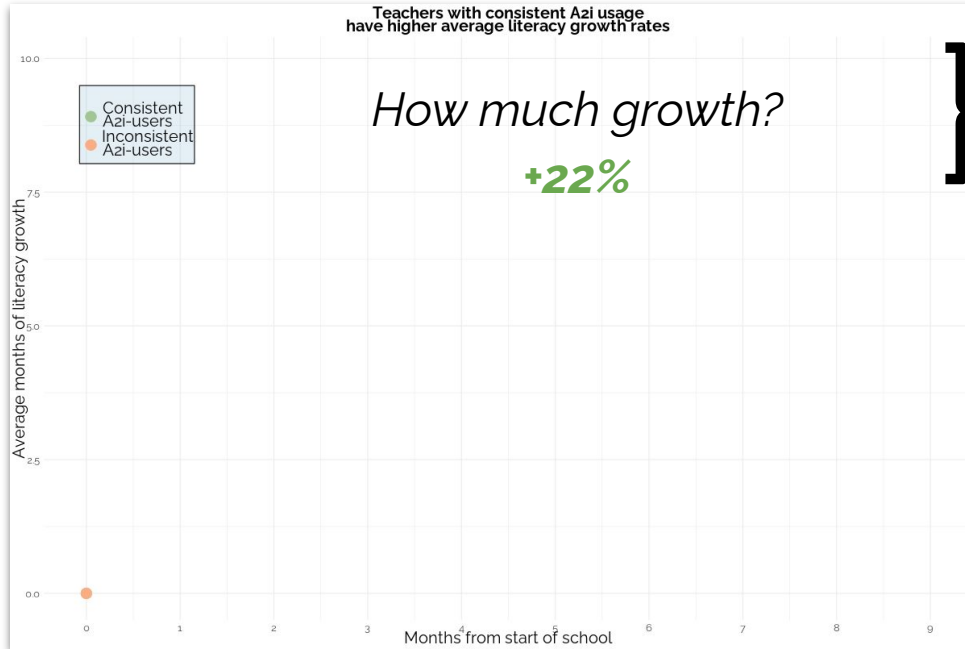
They need to grow FAST!

Students growing ***at baseline*** will maintain their relative position (below-level).

Students growing ***below baseline*** will fall further behind.

So how do we ensure we maximize the number of students with ***accelerated growth***?

Consistent Azi Use Promotes Growth

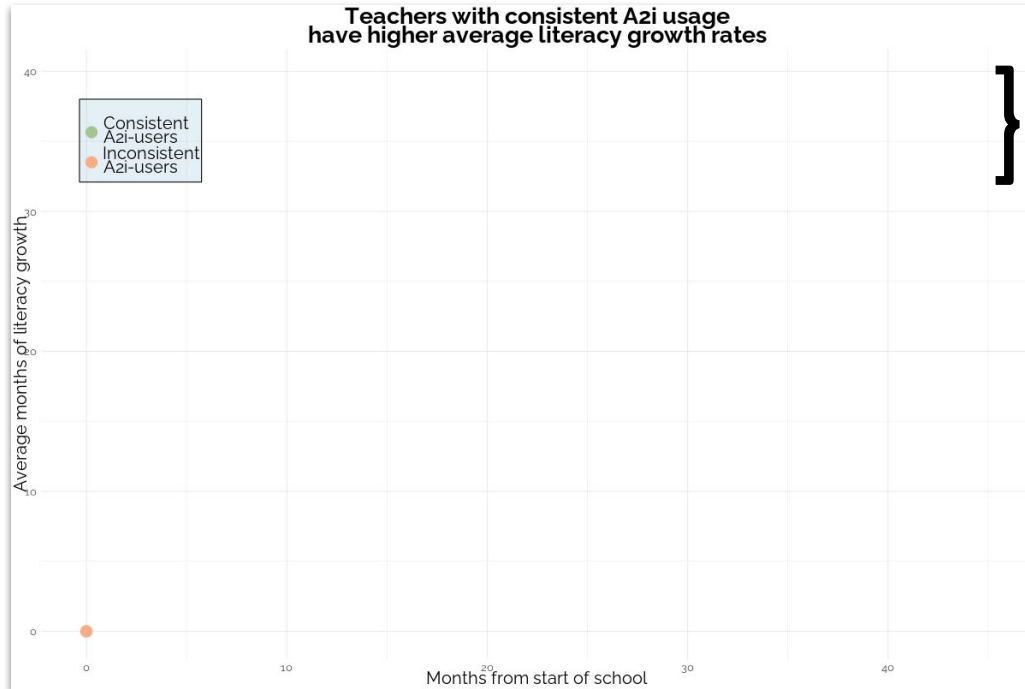


1.8 months

Students can get an extra **1.8 months** in a single school year!

That's the equivalent of an extra 7 weeks, or 35 instructional days

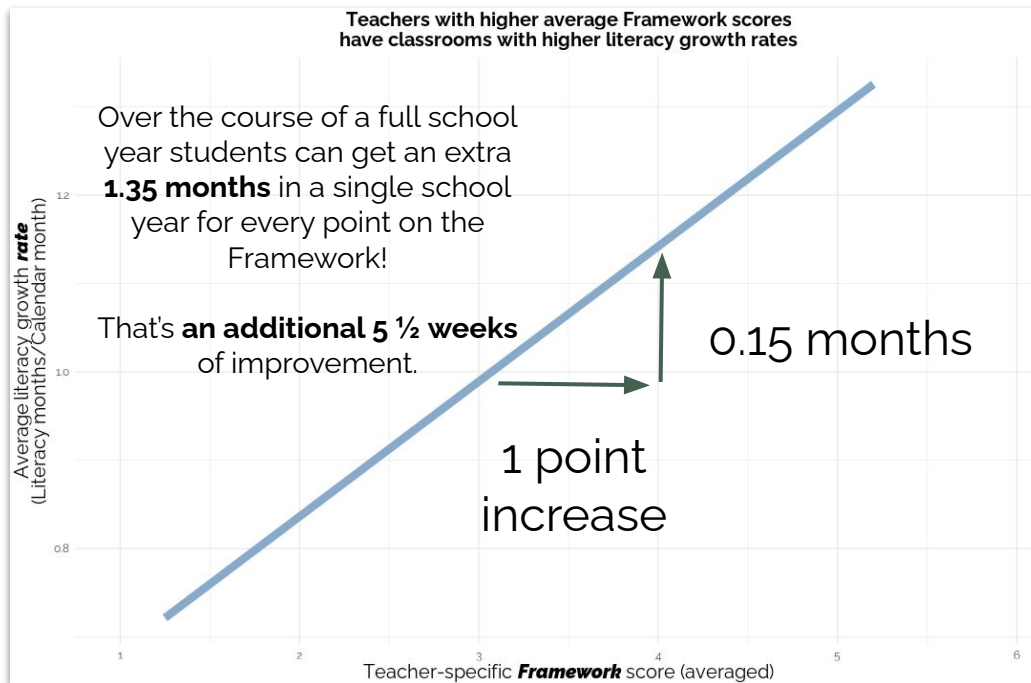
Effects of increased growth rate compound over time



} 7.2 months

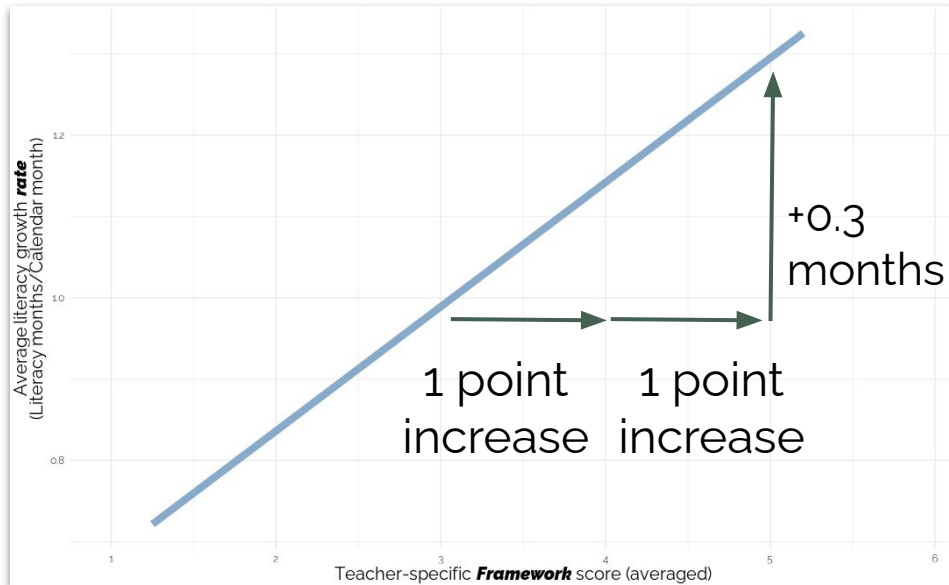
Over the K-3 period, students could get an extra **7.2 months** of growth

Framework growth accelerates student growth



Framework growth accelerates student growth

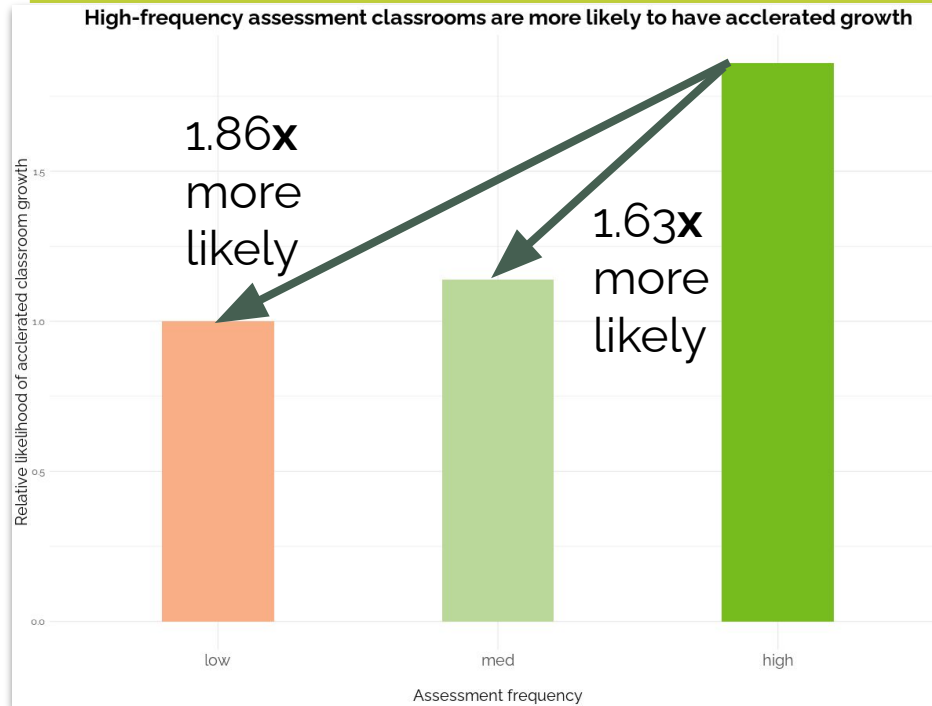
If teachers move their average score by 2 pts on the Framework, that equates to 0.3 months of extra GE growth *per* month



... an extra **2.7 months** in a single school year!

In a school where every teacher moved their Framework score by 2 points, students would gain an additional **10.8 months** over their time in K-3

Better Information Leads to *Faster Growth!*



Teachers who assess frequently are more likely to have accelerated average growth rates

and

have an **additional 10%** of students growing at/above baseline rates.

Better Information Leads to *Faster Growth!*

... an additional 10% of students
growing at/above baseline rates

is

40 additional kids *catching
up* in a school with a K-3
population of 400

Assessing more frequently also increases the likelihood that a
classroom will be improving
(increasing the number of students at/above grade-level)

So What Does All This Mean?

The **best way to save teachers time** is to help them spend the time that they do have on those actions that **MAXIMIZE STUDENT LEARNING**.

The **best way to help students** is to ensure that their teachers are optimizing and individualizing instructional time and instructional content.

The best way to do both?

Operationalize, systematize, and institutionalize the tools and approaches best-supported by research and real-world results... **With Azi!**